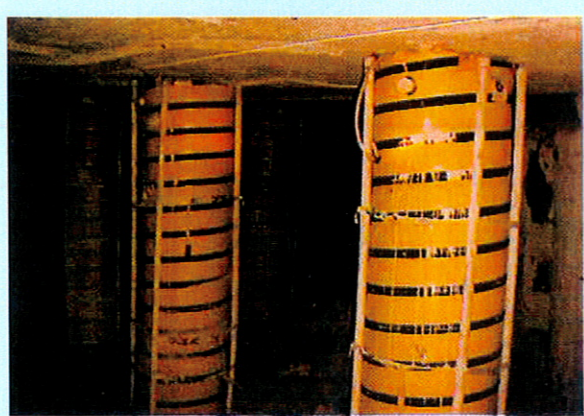




HEITECH PUMPABLE CRIB



HeiTech



Phone: (02) 4355 4545

Fax:(02) 4355 4515

17 Lucca Road

North Wyong NSW 2259

www.heintzmann.com

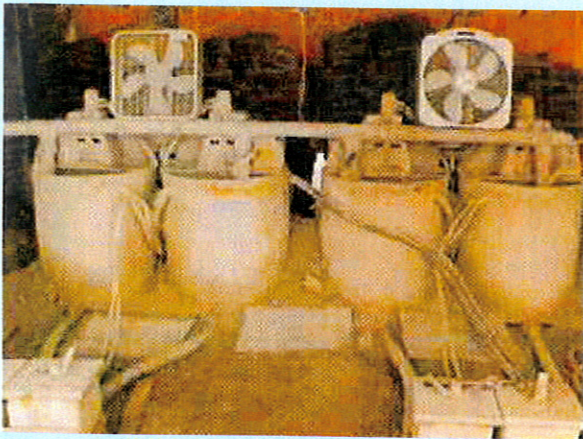
HEITECH PUMPABLE CRIB



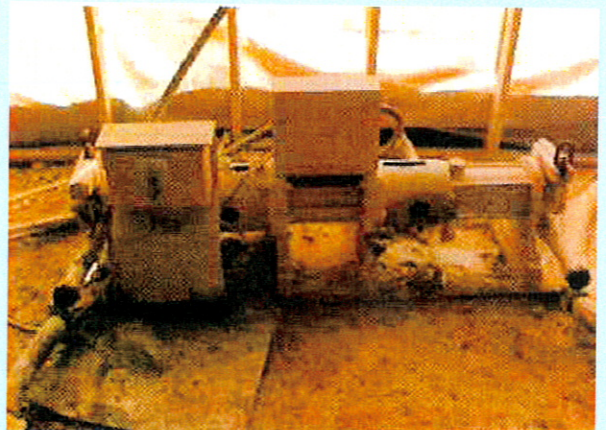
DESCRIPTION

- ◆ HEITECH PUMPABLE CRIB'S consist of a high tensile strength textile bag as a form into which a cementitious grout is pumped in place in the mine entry.
- ◆ A typical crew consists of 7 men, 4 at the installation site and 3 men at the pumping site.

THE PUMP PACKING STATION CONSISTS OF THE FOLLOWING



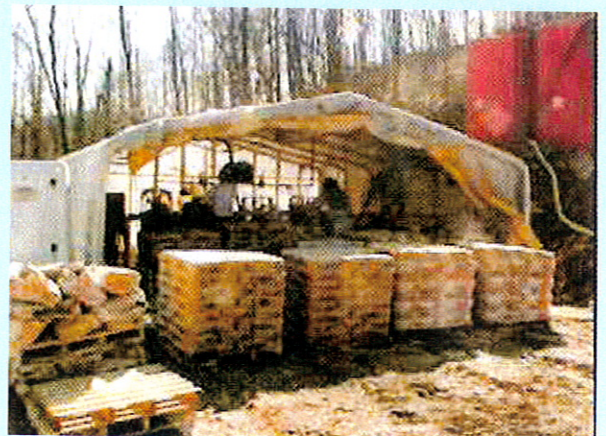
2 PAIRS OF 300 LITRE MIXING
TANKS WITH PADDLE ATTACHMENTS



A DOUBLE ACTING RAM PUMP



ELECTRO HYDRAULIC
POWER PACK



SURFACE PUMP SITE



Phone: (02) 4355 4545

Fax: (02) 4355 4515

17 Lucca Road

North Wyong NSW 2259

www.heintzmann.com

**EXCELLENT FOR LONGWALL TAILGATE AND BLEEDER SUPPORTS
WHERE TIMING AND MATERIAL HANDLING ARE CRITICAL**

- ◆ Average installation rate of 40 to 50 pumpable cribs per shift
- ◆ 85% of final compressive strength within the first 24 hours of pumping
- ◆ Over 100 metres of entry supported per shift
- ◆ Pumpable Crib's provide full contact with mine roof and floor, which allows pre-stressing and eliminates the need for secondary material to establish proper roof contact

**ALSO SUITED TO REMOTE AREAS THAT ARE
INACCESSIBLE TO MINE HAULAGE EQUIPMENT**

- ◆ Pumping distances in excess of 5 kilometres have been achieved
- ◆ Eliminates the need to hand carry material by 95%

The following graphs from Niosh Safety Structures Testing Laboratory show the results from the test of the 610mm (24") and 760mm (30") Pumpable Crib in the Niosh Roof Simulator.

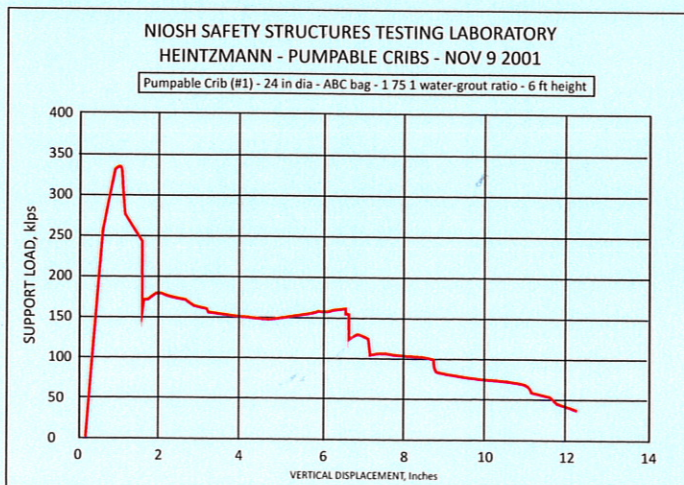


FIGURE 1

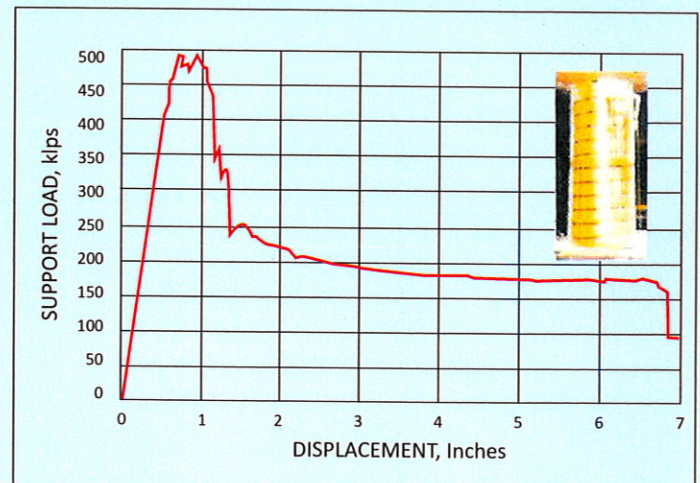


FIGURE 2

As shown in Figure 1, the 24" Pumpable Crib achieves a peak loading of approximately 155 tons and a residual load of approximately 70 tons. As shown in Figure 2, the 30" Pumpable Crib achieves a peak loading of approximately 250 tons in less than 1 inch of displacement.



Phone: (02) 4355 4545

Fax:(02) 4355 4515

17 Lucca Road

North Wyong NSW 2259

www.heintzmann.com

PUMPABLE CRIB KEY POINTS

- ◆ Better roof control
- ◆ Quick Installation
- ◆ Available in 610mm (24"), 680mm (27"), 760mm (30") as well as custom diameters
- ◆ Two component system which allows long pumping distance
- ◆ Pumping station can be used from the surface or underground
- ◆ Rapid strength gain
- ◆ Rapid setting material
- ◆ Heitech introduced the system to the American market
- ◆ Installed over 700,000 Pumpable Supports

ADDITIONAL INFORMATION AVAILABLE BY CONTACTING

Heintzmann Australia - Ron Nielsen

Phone: (02) 4355 4545

www.heintzmann.com